

# CHAPTER 1

## MUNICIPALITY OVERVIEW : ORGANISATIONAL AND GEOGRAPHIC INFORMATION

### 1. ORGANISATIONAL PROFILE

#### 1.1 Municipal Council

The Elundini Municipal Council consists of 32 members in total, half of which were elected in terms of the system of proportional representation and the remaining councilors represent sixteen (16) wards. The political parties represented in the municipal council are as follows:-

- African National Congress 29 Councilors (90,625%)
- United Democratic Movement 02 Councilors (6,250%)
- African People's Convention 01 Councilors (3,125%)

The chairperson of the municipal council is the honourable speaker, councilor L S Baduza.

The council has defined the following role for the honourable speaker (over and above the role assigned by the Municipal Structures Act): -

- Leader of council in respect of the oversight function
- Custodian of the interests of the members of the municipal council
- Politically in charge of the community development workers' programme
- Responsible for the training and development of ward committees

- Receives quarterly reports from the ward councilors, consolidates these reports and submit them to the Mayor and the Municipal Manager to attend to as their responsibilities require.

During the year under review, the municipal council met its quota of 4 council meetings and also had 4 special sittings of the municipal council.

#### 1.2 Ward Committees

In terms of section 72 – 78 of the Municipal Structures Act, Council has established 16 ward committees which are chaired by their respective ward councilors. Each committee has 10 elected representatives although it is acknowledged that not all the elected members are still active.

The ward committees are consultative community structures without any formal powers accorded to them. Where a ward committee is fully functional and effective, it is able to influence the decision taken in Council.

The Elundini municipal ward committees have varying levels of effectiveness. It is worth noting that some of these rudimentary organs of good governance are ailing, with ward committees in wards 1,3,13, 14 and 15 having not met during the

current financial year. Such situations could be indicative of poor community participation, a matter which requires the attention of the Office of the Speaker.

**Table 1:** number of ward committee meetings held in year 2008/2009

Ward Number	Number of Meetings
1	0
2	4
3	0
4	8
5	2
6	9
7	5
8	3
9	4
10	3
11	4
12	3
13	0
14	0
15	0
16	4

### 1.3 The Executive Committee

In terms of section 9(b) of the Municipal Structures Act (117 of 1998), the Elundini Municipality has a collective executive system with a ward participatory system.

The Executive committee is chaired by the Mayor and also consists of five (5) other members appointed by the Council on a proportional basis.

The Executive Committee is the principal committee of the Council. It is the Committee which receives reports from the

standing or portfolio committees of Council and it must forward these reports together with its recommendations to the Council when it cannot dispose of matters in terms of its delegated authority.

The Executive Committee had 5 ordinary meetings and 5 special meetings during the year under review.

The following councilors served in the Executive Committee of the Elundini Municipality during the year under review: -

### 1.4. Committees of Council

The municipal council has established various committees in terms of sections 33 and 79 of the Municipal Structures Act. These committees have been established to address certain specific objectives

#### 1.4.1. Committees to assist the Executive Committee

Section 80 of the Municipal Structures Act, provides that where a municipal council has an executive committee, it may appoint, in terms of section 79, committees of councilors to assist the Executive Committee. The Elundini Municipality has established five section 80 committees which are aligned to the administrative departments and are chaired by members of the Executive Committee.

## ELUNDINI MUNICIPALITY : EXECUTIVE COMMITTEE



**The Honourable Speaker: Mrs L Baduza**  
Chairperson of the Municipal Council



**His Worship the Mayor: Cllr B Salman**  
Chairperson of the Executive Committee(EXCO)



**Council Chief Whip: Cllr. Mvumvu**  
Member of EXCO and Chairperson of the Community Services Standing Committee Meeting.



**pdfMachine**

**Is a pdf writer that produces quality PDF files with ease!**

Produce quality PDF files in seconds and preserve the integrity of your original documents. Compatible across nearly all Windows platforms, if you can print from a windows application you can use pdfMachine.

Get yours now!

**Cllr. N.F Mpithi**

Member of EXCO and Chairperson of  
Corporate Services Standing Committee

**Cllr. N.R Lengs**

Member of EXCO and Chairperson of  
Technical Services Standing Committee

**Cllr M.P Leteba**

Member of EXCO and Chairperson of  
Financial Services Standing Committee

**Cllr. Mqamelo**

Member of the Executive Committee

**ELUNDINI MUNICIPALITY: EXECUTIVE MANAGEMENT**



**MR K. GASHI**  
MUNICIPAL MANAGER

**pdfMachine**

**Is a pdf writer that produces quality PDF files with ease!**

Produce quality PDF files in seconds and preserve the integrity of your original documents. Compatible across nearly all Windows platforms, if you can print from a windows application you can use pdfMachine.

Get yours now!



MS C QOTOYI  
TECHNICAL SERVICES MANAGER



MRS. L MQOKOYI  
COMMUNITY SERVICES MANAGER



MR. S R MATUBATUBA  
CORPORATE SERVICES MANAGER



MR. KASUMBA  
CHIEF FINANCIAL OFFICER  
(resigned in 30 August 2009)

**pdfMachine**

**Is a pdf writer that produces quality PDF files with ease!**

Produce quality PDF files in seconds and preserve the integrity of your original documents. Compatible across nearly all Windows platforms, if you can print from a windows application you can use pdfMachine.

Get yours now!

The following standing Committees were in place during the year:-

Standing Committee	Chairperson	Area of Responsibility	Number of meetings held
Financial Services	Cllr. M P Leteba	Income, Expenditure, accounting, budgeting, Supply Chain Management, Asset Management	6
Corporate Services	Cllr. N.F Mpithi	HR Management and Development, administration, council support, security services, traffic services, legal services, ICT	5
Community Services	Cllr. DD Mvumvu	LED, poverty alleviation, housing, Spatial planning, land administration,	4
Technical Services	Cllr. N.R Cllr Lengs	Roads and storm water, water, sanitation, electricity, solid waste management, public transport systems	5
Strategic Governance	Cllr. B Salman	Youth development and empowerment, Women development and empowerment, Empowerment of people with disabilities, Strategic communications and customer care, Public participation, Integrated development planning, Performance management, HIV and AIDS	0

The strategic governance committee was established on the 27 March 2009, and in a subsequent meeting of council on 30 April 2009 a decision was taken to hold its operation in abeyance.

#### 1.4.2. Section 79 Committees (Committees to advise the Municipal Council)

In order to enhance its ability to perform its constitutional mandate, the municipal council also established the following committees, viz: -

- Members Interests and ethics committee
- Oversight committee
- Audit Committee

The members' interests and ethics committee has not yet met, as its terms of reference are still being refined. The decision to establish a permanent oversight committee was taken in the council meeting held on 27 March 2009. Prior to this meeting, the oversight committee had been appointed on an ad hoc basis only to develop an oversight report on the annual report, after which it would be disbanded. The terms of reference for the oversight committee are also being revised. There is a dedicated chapter on the audit committee and its activities during the year under review.

pdfMachine

Is a pdf writer that produces quality PDF files with ease!

Produce quality PDF files in seconds and preserve the integrity of your original documents. Compatible across nearly all Windows platforms, if you can print from a windows application you can use pdfMachine.

Get yours now!



### 1.4.3. The Management Committee

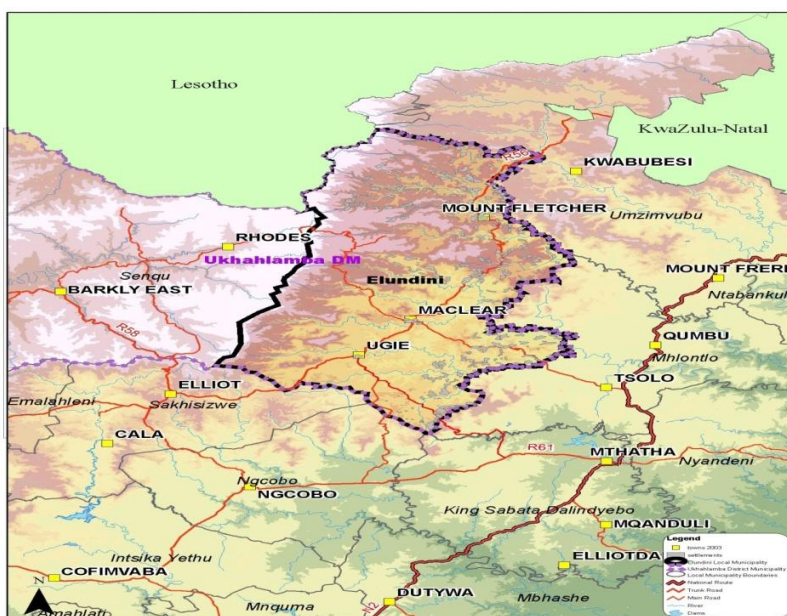
The management Committee consist of the senior management of the municipality's administration. These are the members of the top management of the municipality's administration and consist of:-

- The Municipal Manager appointed in terms of section 82 of the Municipal Structures Act
- Managers directly accountable to the Municipal Manager and appointed in terms of section 56 of the Municipal Systems Act.

During the year under review, the Municipal Manager appointed various assistant managers, in terms of section 55 of the Municipal Systems Act and the applicable recruitment policies of the Elundini Municipality, as follows: -

- Assistant manager responsible for integrated development planning and performance management
- Assistant manager responsible for strategic communications, public participation, special programmes and HIV and AIDS
- Assistant Manager responsible for Supply Chain Management
- Assistant Manager responsible for planning and development
- Assistant Manager responsible for administration

## 2. GEOGRAPHIC AND DEMOGRAPHIC PROFILE



Source: Elundini Municipality IDP: 2008/2009

pdfMachine

Is a pdf writer that produces quality PDF files with ease!

Produce quality PDF files in seconds and preserve the integrity of your original documents. Compatible across nearly all Windows platforms, if you can print from a windows application you can use pdfMachine.

Get yours now!

### Locality

Elundini Municipal area is located in the east of the Ukhahlamba District Municipality and shares boundaries with the following local municipalities:

- Umzimvubu to the northeast,
- Mhlontlo to the southeast,
- Sakhisizwe to the southwest, and
- Senqu to the west.
- Lesotho is situated on its northern border.

### Population Figures

The Elundini Municipality has a population of approximately 137 580 people residing in 33 248 households (census 2001). This population accounts for 40.31 % of the total population residing in the Ukhahlamba District, making it the most populated local municipality in the district.

### Population Projections

Based on the modeling done by the Department of Health (District Health Information System) and using the statistical models provided by StatSSA, the projected population of Elundini is listed in the table below:

Elundini Local Municipality covers an area of 5064km<sup>2</sup> and divided into 16 wards.

It has three towns namely; Mount Fletcher, Maclear and Ugie, and is characterized by rural villages situated in the foothills of Maluti Mountains and Southern Drakensburg range.

The R56 runs from Elliot through Elundini Municipal area linking the three towns with Kwazulu – Natal.

Area	Projected Population	
	2006	2009
Elundini	135,390	133,813
Ukhahlamba	336,828	334,673

Source: Elundini IDP

While these figures are disputed (even by the Dept. of Health who have the best interaction with community based statistics and who have identified a severe undercounting especially of children) these are taken as to represent the Ukhahlamba District Area. It is critical to note that based on current modeling it is expected that the population will be decreasing in the area due to the effects of out migration as well as due to the impact of HIV and AIDS.

pdfMachine

Is a pdf writer that produces quality PDF files with ease!

Produce quality PDF files in seconds and preserve the integrity of your original documents. Compatible across nearly all Windows platforms, if you can print from a windows application you can use pdfMachine.

Get yours now!



## Rural vs Urban Population



Maclear open market

According to the 2001 Census 77% of households are rural in nature, this includes rural villages and farm households. This dynamic is shifting with the phenomenon of urban in-migration occurring in Elundini Municipality. This is especially evident in the town of Ugie, where the town's population has increased from 8 344 in 2001 to approximately 16 355 in 2004. This figure has probably increased with the addition of 2 130 new housing units planned for Ugie, which will accommodate approximately 10 560 people. The establishment of the timber manufacturing

plant has particularly had a pull effect on the town of Ugie and the neighbouring Maclear, which has had an effect of overstressing the already strained infrastructure.

## Age, Gender and Racial Profile

Approximately 50.3% of the municipal population falls in the 15 – 65 age category which can be seen as the economically active sector of the population, with 42% of the population below the age of 15.

This suggests continuing population growth in the district with a need for educational facilities and a focus on education and skills training.

The overall male and female ratio is approximately 46% male to 54% female. This may be ascribed to the migrant and commuter labour which has resulted in many households having a woman as the head of the household and the chief breadwinner living away from the home. This will impact on the type of development that will occur.

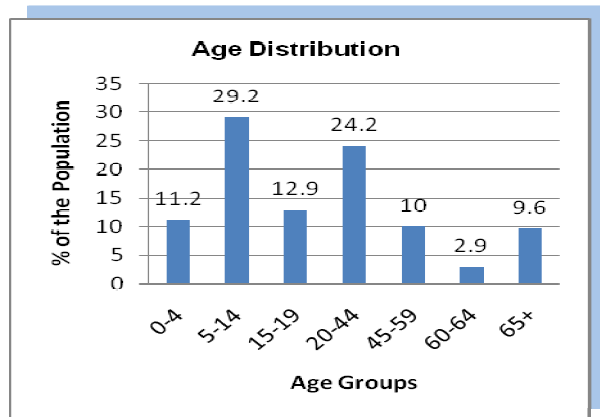
**pdfMachine**

**Is a pdf writer that produces quality PDF files with ease!**

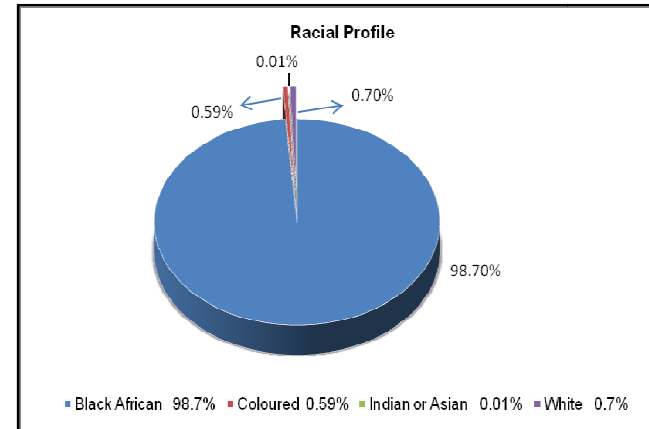
Produce quality PDF files in seconds and preserve the integrity of your original documents. Compatible across nearly all Windows platforms, if you can print from a windows application you can use pdfMachine.

Get yours now!

## THE AGE DISTRIBUTION AND AGE DISTRIBUTION



Source: Census 2001



The majority (99%) of the population are Black Africans. The main economic drivers of Elundini Municipality are Agriculture, Tourism and Forestry.

**pdfMachine**

**Is a pdf writer that produces quality PDF files with ease!**

Produce quality PDF files in seconds and preserve the integrity of your original documents. Compatible across nearly all Windows platforms, if you can print from a windows application you can use pdfMachine.

Get yours now!

## **UNEMPLOYMENT AND DEPENDENCY ON SOCIAL GRANTS**

Data from the 2007 Community survey (ECSSEC) indicates that there are 19 02people employed in Elundini which is 30% of the population.

Data from SASSA ( August 2008) indicates that the total value of state support in the form of grants to Elundini Municipality population is **R17 263 810** per month. This is 42.8% of the total value of state support to the district( at **R40 301 044** per month.)

**pdfMachine**

**Is a pdf writer that produces quality PDF files with ease!**

Produce quality PDF files in seconds and preserve the integrity of your original documents. Compatible across nearly all Windows platforms, if you can print from a windows application you can use pdfMachine.

Get yours now!

**pdfMachine**

**Is a pdf writer that produces quality PDF files with ease!**

Produce quality PDF files in seconds and preserve the integrity of your original documents. Compatible across nearly all Windows platforms, if you can print from a windows application you can use pdfMachine.

Get yours now!